



# POWERING A GREEN FUTURE



# We Are SolaX



## Vision

To be the trusted global leader in smart energy solutions

## Mission

Committed to providing optimal new energy solutions for global customers

## Core Values

Innovation, Excellence, Ethics, Win-Win

**2012**  
Founded

**2000+**  
Employees

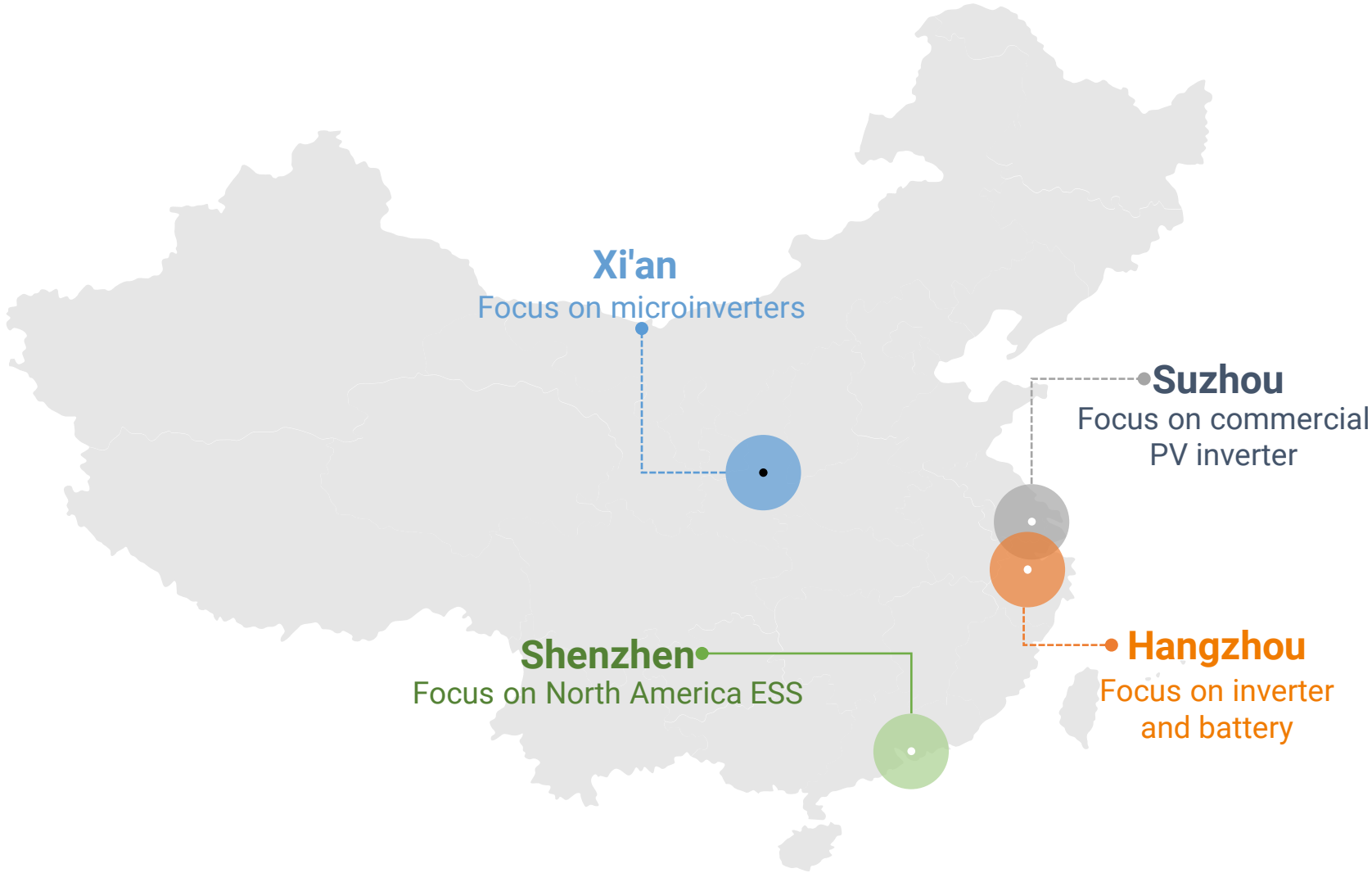
**100+**  
Patents

**80+**  
Markets

**500+**  
Certifications

**600+**  
R&D Personnel

# Innovation at Our Core



**6-8%**

R&D Investment ratio



**10+**

R&D years



**600+**

R&D staff



**30%+**

R&D staff ratio

# Our Global Network

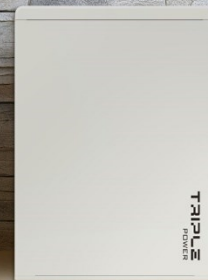
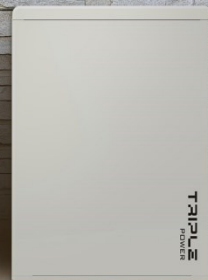
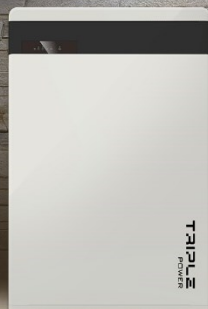


- Sales & Support
- Local Service Engineer
- Repair Center & Warehouse
- Local Service Hotline

# ENERGY STORAGE SYSTEM

**SOLAX**  
POWER

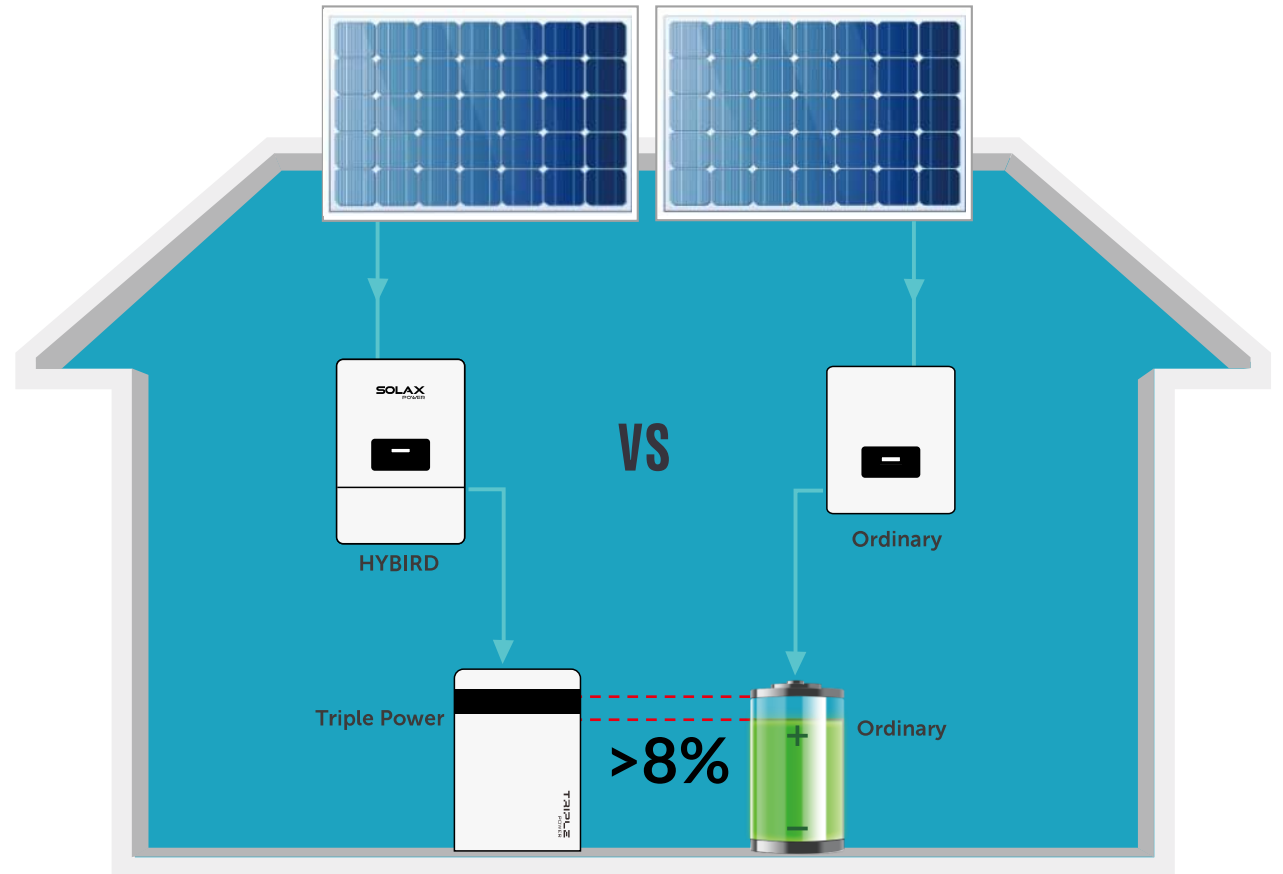
**TRIPLE**  
POWER

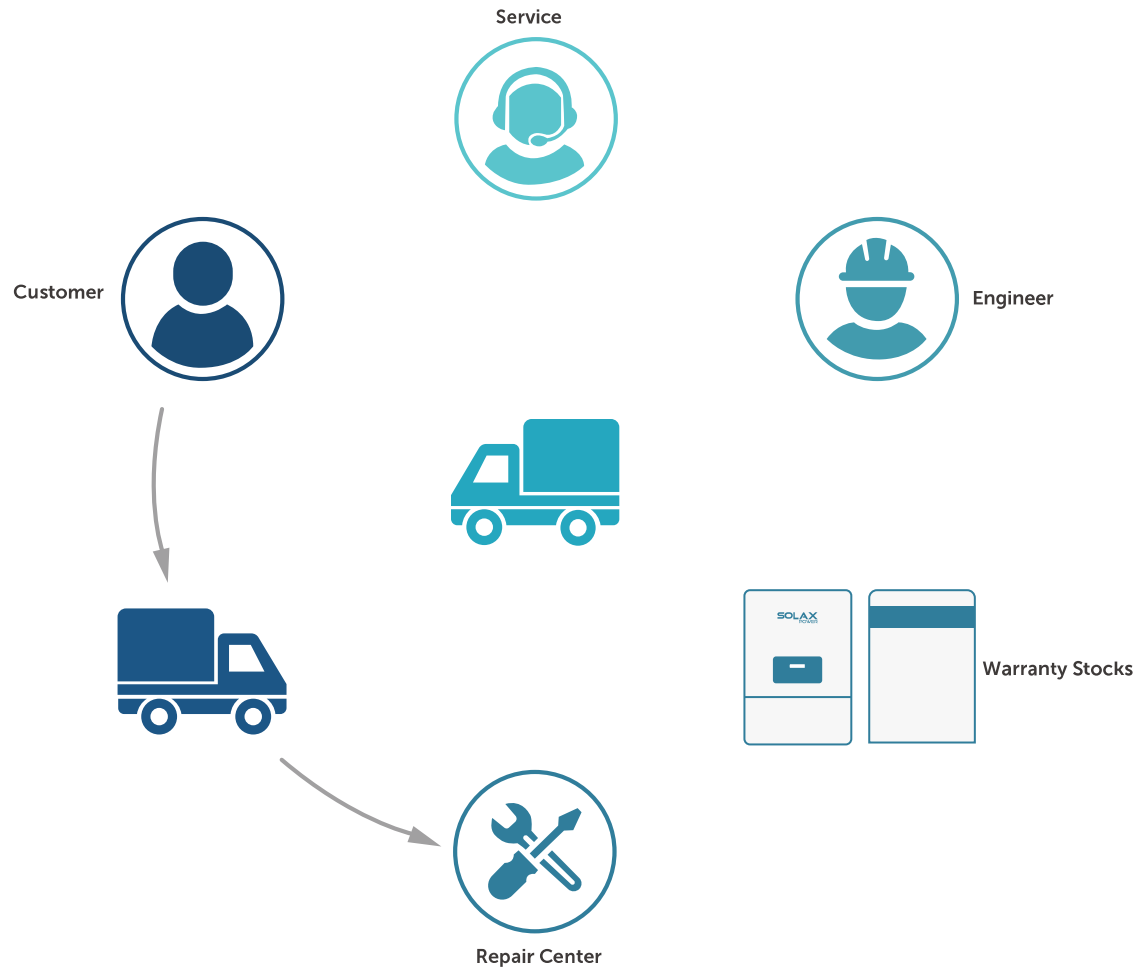


# 01. High Voltage = Better Efficiency

## High voltage storage system

Compared with traditional storage systems, the high voltage system's overall efficiency can be higher by about **8%**.





## 02. one stop solution

- All products are solely-developed and self-manufactured by SolaX, including hybrid inverters, storage batteries, BMS, and battery packs.
- From manufacturing to after-sales support, you can trust us for high-quality products and services.

## 03. Full range, variable scenarios



**X1-Hybrid**



**X3-Hybrid**



**X1-Retro Fit**



**X3-Retro Fit**



**X1-AC**

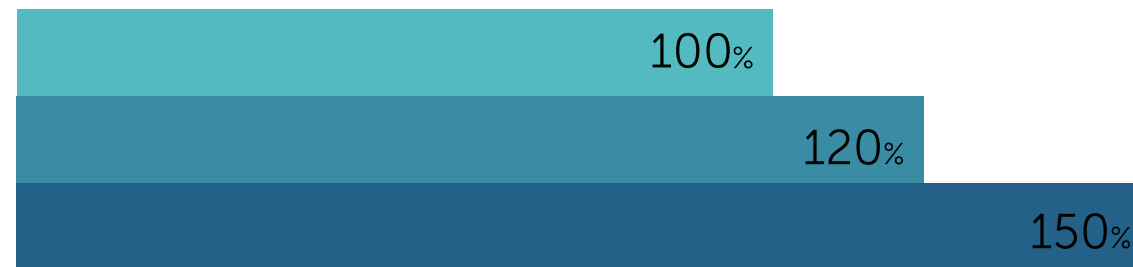
Covering the full range of hybrid inverter products such as single phase, three phase, AC charger, and retrofit units, SolaX's storage products can be widely adopted in various applications, including residential, industrial, commercial, VPP, and frequency modulation etc.

---



## 04. Protect against power outages

Under off-grid mode with EPS function, SolaX's hybrid system provides better performance, such as 120% output and 150% EPS peak output power. (EPS Peak output time depends on actual application)



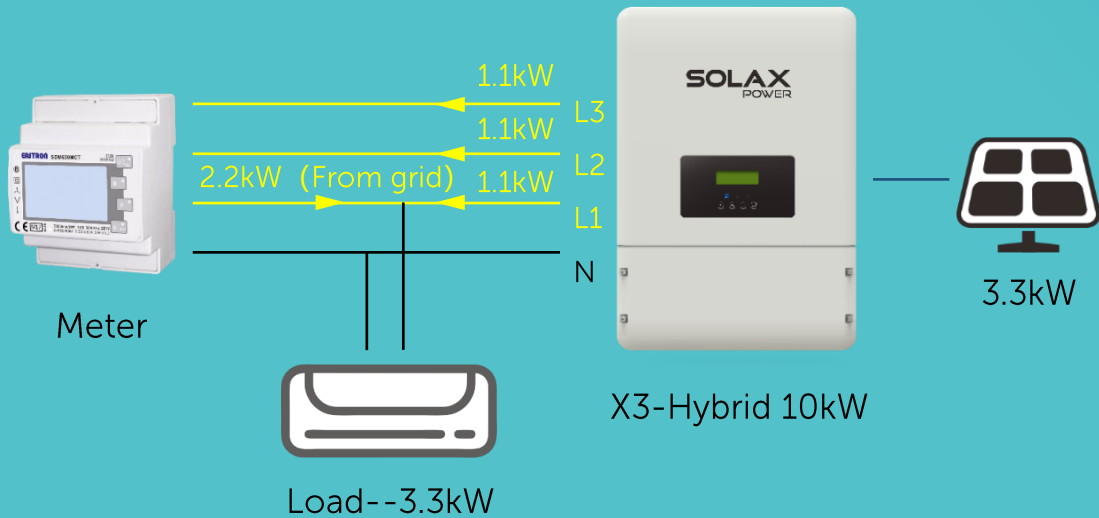
## 05. Parallel function

Under on-grid mode, there are various options to utilize the unbalanced power output. Furthermore, SolaX's hybrid products provide parallel applications, both on-grid and off-grid, with up to 10 inverters in one system, forming a 100kW storage system.

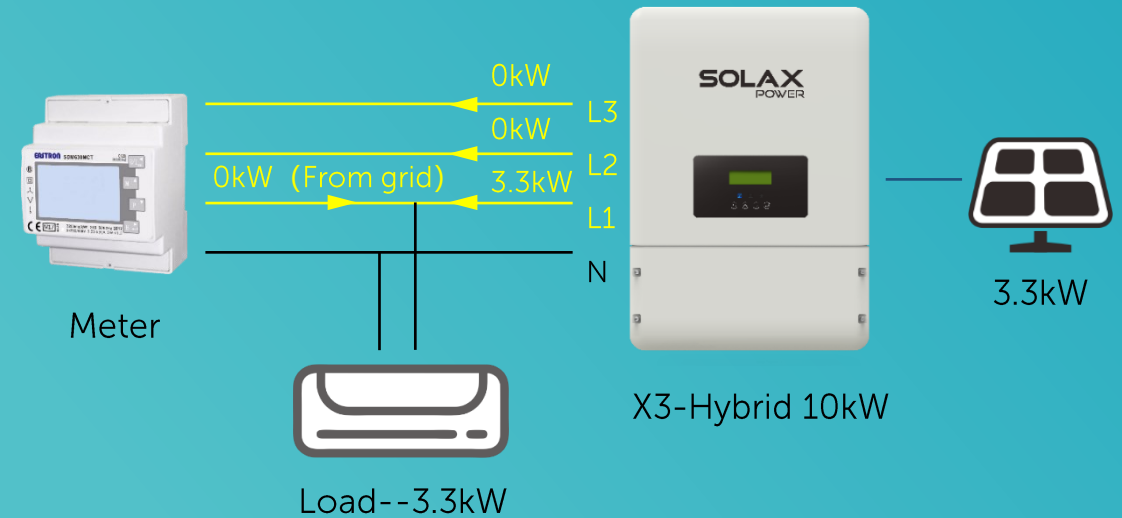


# 06. Three phase unbalanced output supported

Three Phase Balanced Output Supported



Three Phase Unbalanced Output Supported



- Household load less than 3.3kW, no need to buy electricity from the grid
- Prevent voltage imbalance when using high-power electrical appliances.

## 07. Battery capacity range from 5.8 kWh to 46 kWh



---

### Flexible installation

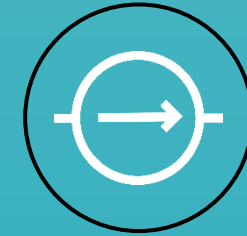
Floor or Wall Mounted



---

### Troubleshooting

With Fault Indicator  
Function



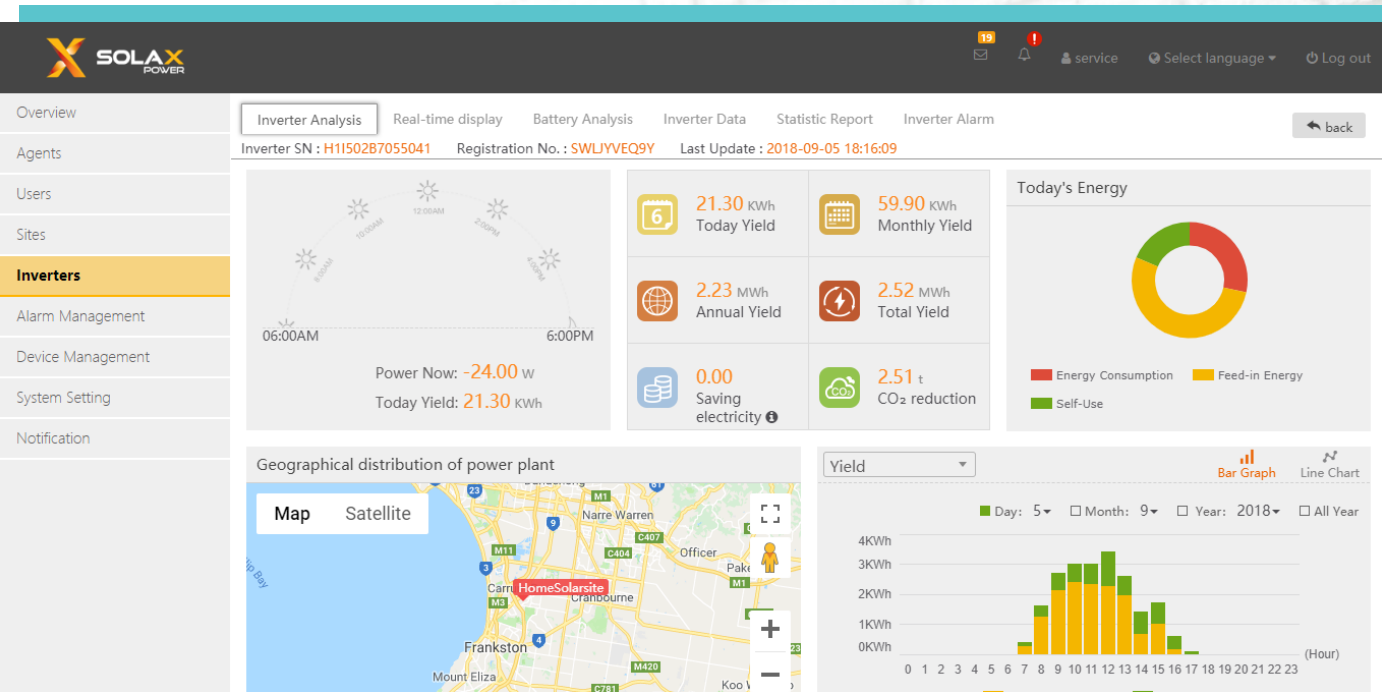
---

### Over current protection

Self-developed BMS prevents  
over-charging and over-  
discharging of batteries when the  
ambient temperature is not  
friendly

## 08. Real-time intelligent monitoring

With real-time intelligent monitoring, SolaX's stable and efficient storage system provides all the performance information in the data system, enabling end-users to have a complete understanding of their own systems, including remote update and settings of hybrid inverters and batteries. This not only guarantees the security of customers' storage systems, but also saves the time & cost of maintenance.



## 09. Remote control and remote upgrade

Anywhere, anytime,  
you can remotely control your inverter and battery,  
and remotely upgrade both inverter and battery.



[www.solaxcloud.com](http://www.solaxcloud.com)  
APP Download





## 10. Highly protective

IP65 rated for inverter and IP55 for battery.  
Water-resistant and dustproof for indoor or  
outdoor installation.

# Soluții de stocare energie rezidențiale



Scanează pentru  
Fișele tehnice



X1-Hybrid G4  
3-7.5kW



X3-Hybrid G4  
5-15kW



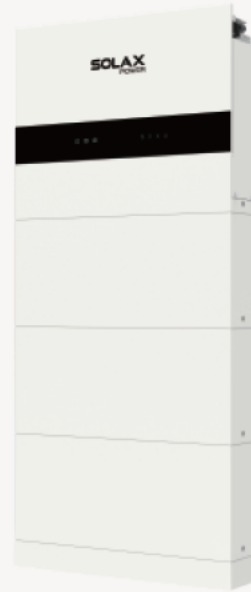
HS25&36  
2.5-3.6kWh



HR25&36  
2.5-3.6kWh



X-ESS G4  
3-15kW



IES  
3-15kW



T30  
3.0kWh



T58  
5.8kWh



# Soluții de stocare a energiei pentru Comercial și Industrial - C&I



Scanează pentru  
Fișele tehnice



X3-ULTRA  
15-30kW



Dulap ESS-AELIO  
50/60kW



Dulap ESS-TRENE  
100kW

# HIGH EFFICIENCY AND ULTRA SAFE PV SOLUTIONS



# C&I STORAGE SOLUTIONS

**SOLAX**  
POWER

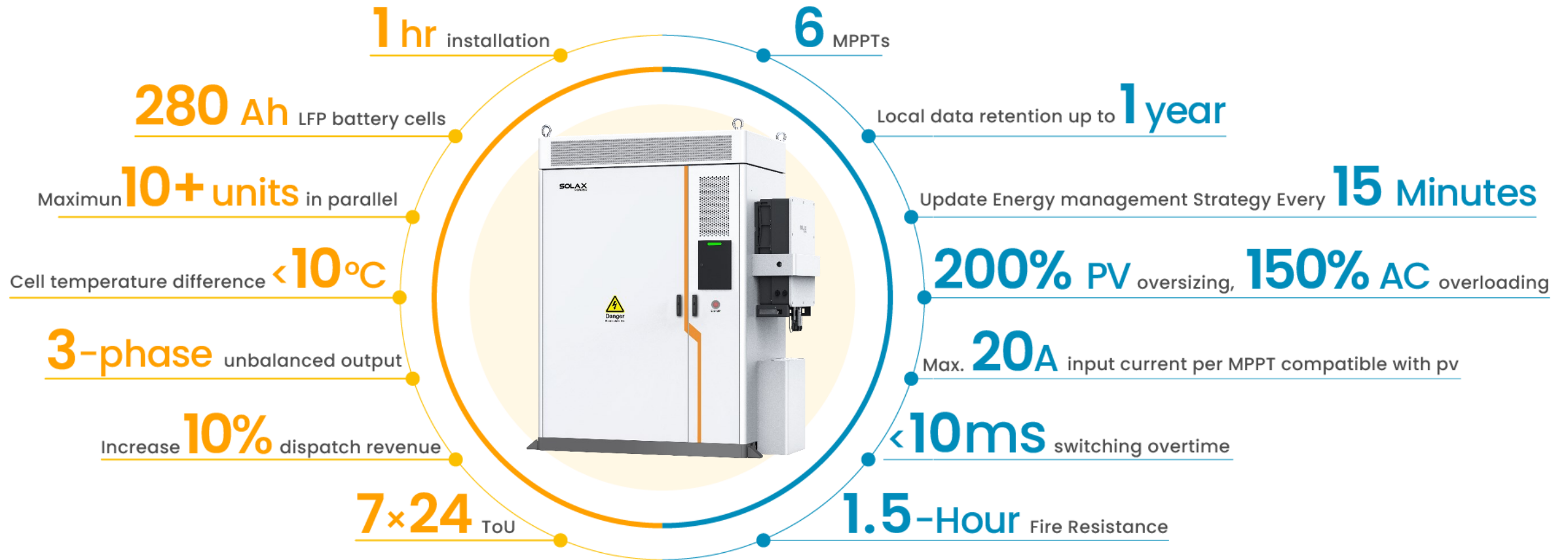


# THE LEADING SOLAR ENERGY STORAGE SOLUTION PROVIDER



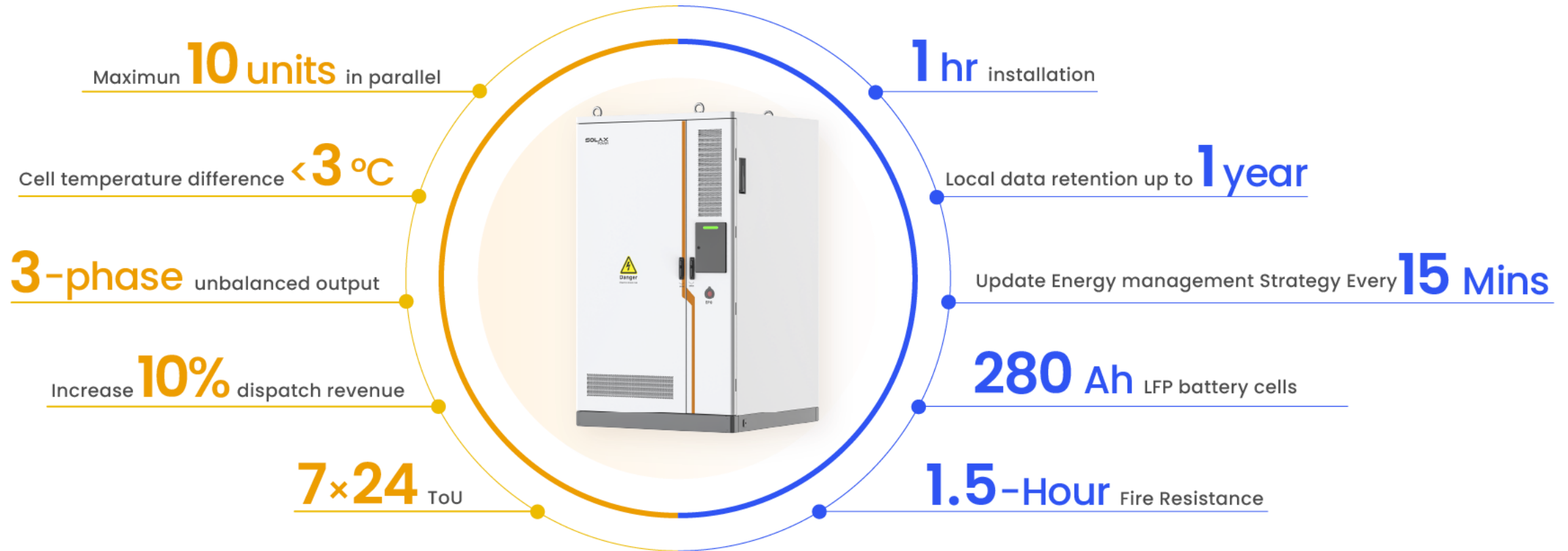
## 100 / 200kWh stand-alone capacity

AELIO-P50B100  
AELIO-P50B200



## 215 / 233kWh stand-alone capacity

TRENE-P100B233L



# System Overview

- One-stop solution

## Various application scenarios

- Micro-grid supported
- VPP dispatch supported
- Warehouse, Factory, Mall etc
- Charging station

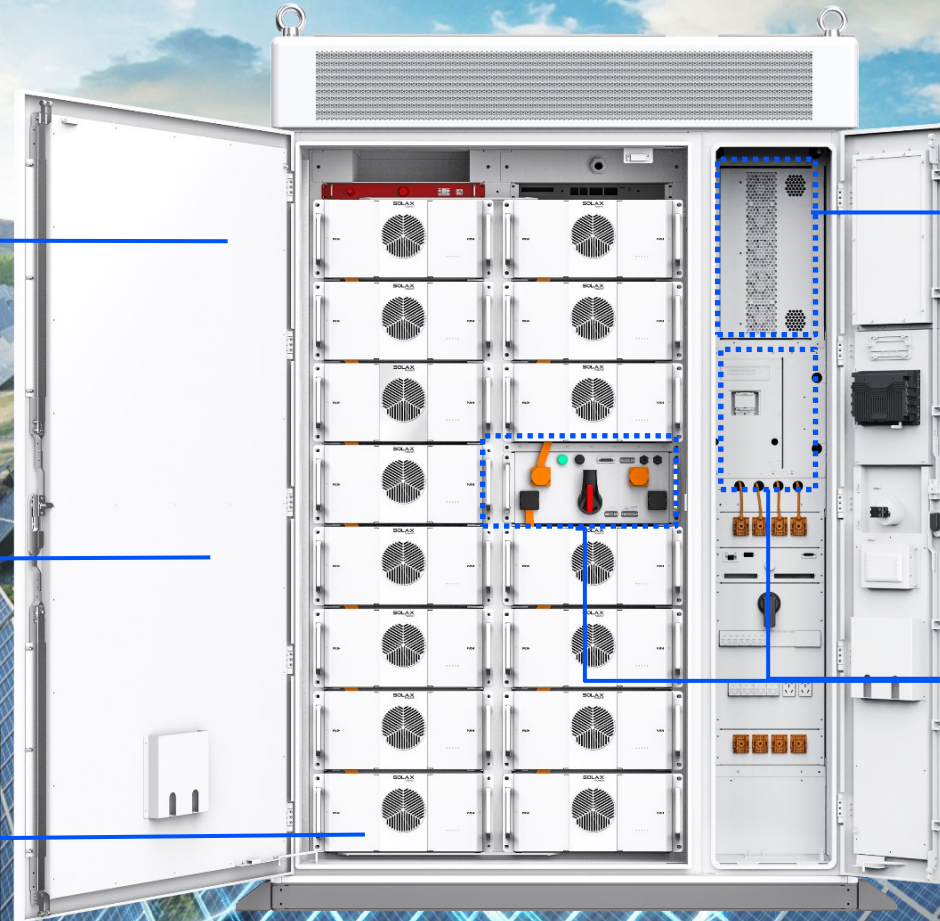
## Superior capacity

- 280AH LFP battery
- **Expandable to MWh**

## Robust safety

### Air cooling module

- Cell temperature difference < 10 °C
- **Four-level fire protection**



## High versatility

### PCS

- 100kW, **max 110kW output**
- Three-phase unbalanced output
- Support SVG
- 3P4W system

## Intelligent energy management

- **Self-development EMS&BMS**
- Solax Cloud & APP
- Smart Schedule & Smart scene
- cell level data real-time monitoring
- local data retention up to 1 year

## All-in-one design

- Fast & simple installation
- Effortless O&M

# KEY FEATURES

**SOLAX**  
POWER

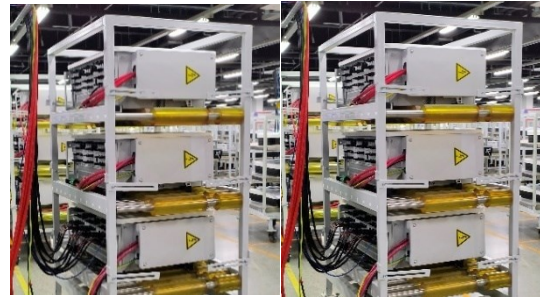


# Robust Safety

## Strict Testing Process



**ICT Test**



**ATE 1 Test**



**Ageing Test**



**ATE 2 Test**



**IP Test**



**HALT Test**



**Salt Spray Test**



**Drop Test**

# Solax Cloud

- Informative and Intuitive interface
- Unified management of power stations and devices
- Dashboard supports customization
- Consumption monitoring
- Revenue monitoring
- 10 sec Real-time data refresh
- Apps are available on Google Play & App Store

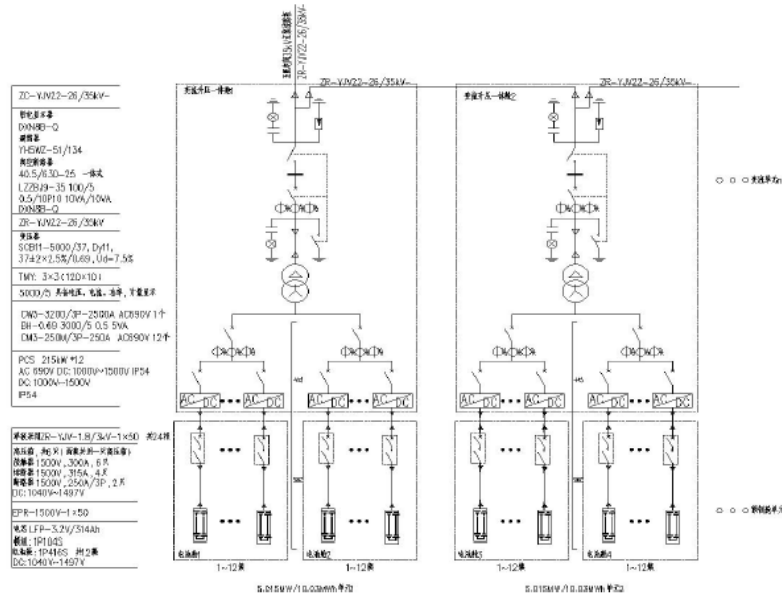


**Simple** and intuitive remote operation

# Customised Solutions on demand

## 1.3. Overview of the energy storage system

The proposed scale of this project is 2.5MW / 5 MWh, and the 800V pooling line is used to connect to the corresponding booster transformer and then merge into the medium and high voltage bus bar. The energy storage system accepts and responds to the power grid dispatching, and realizes the purpose of local peak modulation and frequency modulation of the power grid.



- 450kw, 900kwh
- 2.5MW, 5MWh



The 5,015 kWh liquid-cooled system

Table 2.1 System Technical Parameters

Converter parameters	
AC-side rated power	215kW *24
Number of DC channels	1 channel *24
overload capacity	1.1In times long time overload, 1.2In overload for 10min
The AC-current distortion rate	<3%
direct component	<0.5%
AC-side rated voltage	800V
Power grid voltage range	(-15%~10%) Un
The DC-side voltage range	1000~1500V
<b>Converter efficiency</b>	<b>98.5%</b>
power factor	-0.98 (lag) ~ + 0.98 (advance)
Rated power grid frequency	50/60Hz
Power grid frequency range	50/60±5Hz
isolation method	Transformer isolation
system parameter	
Battery prefabricated dimensions (LWH)	6058*2438*2896
mm	
Battery prefabricated cabin weight	About 45t
levels of protection	IP54
Operating temperature range	-30~50°C (> 45°C capacity reduction)
Maximum work altitude	5000m (> 4000m capacity reduction)
Battery temperature control mode	liquid cooling
Fire protection system (battery prefabricated compartment)	Aerosol + water fire protection
System communication interface	Ethernet

**SERVICE SUPPORT**

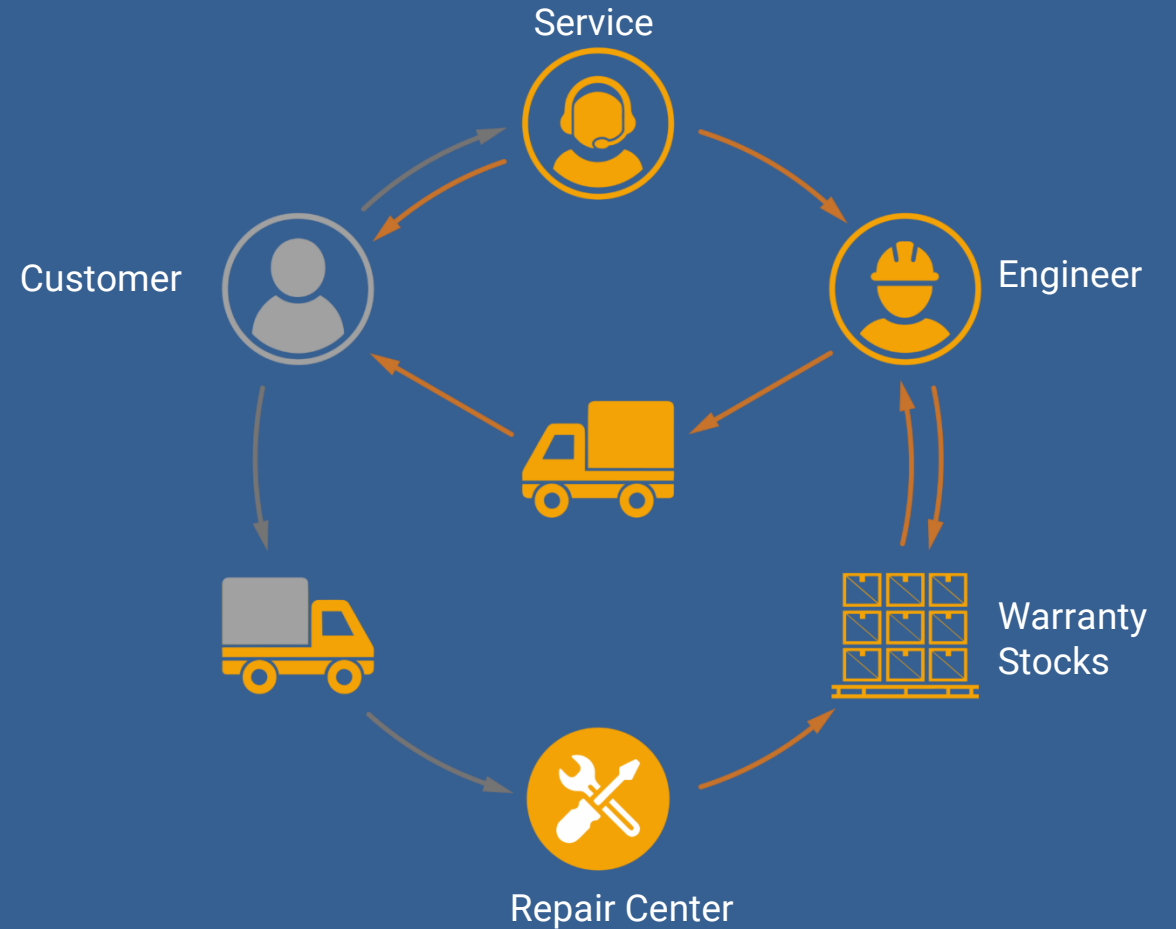
**SOLAX**  
**POWER**

# SolaX Certification Program



# One Stop Solution

- All products are solely-developed and self-manufactured by SolaX, including On-grid inverters and accessories.
- From manufacturing to after-sales support, you can trust us for high-quality products and services.



# CASE STUDIES

**SOLAX**  
POWER

## Off-grid hybrid system, with Triple Power Batteries and SolaX Power X3 Hybrid G4 inverter - Ready



- SolaX Power X3 HYBRID G4 inverter
- 8 x Triple Power Batteries T-BAT-SYS-HV-5.8
- Total Storage: 46,4 kWh



*AELIO Project in BRASIL – in progress*



**NEW PRODUCT**

**SOLAX**  
POWER





**PARTNER**



**PARTNER**

# SOLAX POWER

 [ro.solaxpower.com](https://ro.solaxpower.com)

 [sales.balkans@solaxpower.com](mailto:sales.balkans@solaxpower.com)

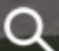


**KNOWLEDGE  
BASE**



\*Learn more at <https://kb.solaxpower.com>



 [solaxpower](https://solaxpower.com)